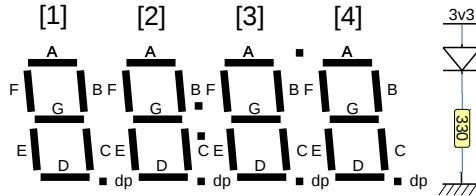
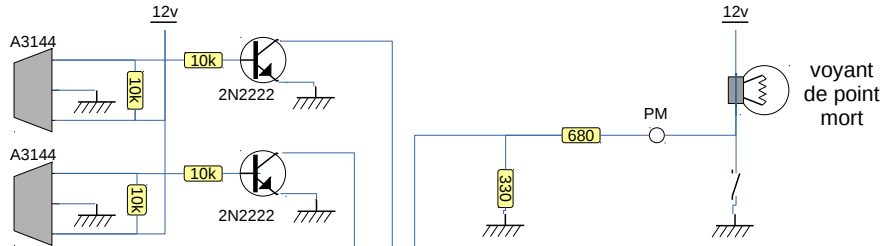


HONDA ST1100

aff. rapport engagé + température

Capteurs à effet Hall



anodes { [1],[2],[3],[4] }
const byte AFF[4]={11,10,19,18}

cathodes { G,F,E,D,C,B,A,dp } (G=1...A=64)
const byte SEG[8]={1,5,8, 9, 3,0, 2, 7 }

const byte //valeurs décimales des segments allumés
CODE[10]={126,48,109,121,51,91,31,112,127,115};
(dp=+128) 0 1 2 3 4 5 6 7 8 9

